

# Ternhill Farm House & The Cottage Restaurant

## Access Statement

### ADDRESS & LOCATION

1. On the crossroads of the A53 & A41, 3 miles West of Market Drayton
2. Address/contact details  
Ternhill Farm House & The Cottage Restaurant  
Ternhill  
Market Drayton  
Shropshire TF9 3PX  
Tel: 01630 638984  
Website: [www.ternhillfarm.co.uk](http://www.ternhillfarm.co.uk)  
Email: [info@ternhillfarm.co.uk](mailto:info@ternhillfarm.co.uk)  
Michael & Joanne Abraham
3. Nearest towns are Market Drayton (3 miles), Shrewsbury (15 miles) Telford (12 miles)
4. A bus service runs from immediately outside Ternhill Farm House, and a timetable is available at the bus stop
5. Once you have made a reservation for accommodation with us we will post or email a Confirmation detailing your reservation together with general information on our facilities & location.  
We will also require credit/debit card details or a £10 per room per night non refundable deposit to secure your reservation.
6. Vehicular & pedestrian entrance via an archway (approx 10' width & 11'6" height) off the A53 into a concrete parking area.  
There are 5 under cover parking spaces together with an additional 10 marked bays in the outdoor car park.  
Each bay is marked with white lines

### PHYSICAL ATTRIBUTES OF THE PROPERTY

7. Ternhill House is a Grade II Listed Georgian farmhouse on a non-working farm, dating from 1750's
8. The Back Door is reached by 2 stone steps.  
The first is 9.5cm (3.75 inches) high & 74cm (29.25 inches) deep,  
the second is 14cm (5.5 inches) high & 170cm (67 inches) deep
9. The Front Door is reached by 3 stone steps  
The first is 12cm ( 4.75 inches) high & 40.5cm ( 16 inches) deep,  
the second is 17cm (6.75 inches) high & 53cm (21 inches) deep,  
the third (door frame) is 3.5cm (1.5 inches) high & 9cm (3.5 inches) deep
10. Floor Plans are available for both the Ground Floor & First Floor areas.
11. We are happy to give you a tour of the house, pointing out any potential hazards
12. We are a totally no-smoking establishment
13. The ground floor is on one level.  
The back hallway & front hallway are terracotta tiled  
The Dining Room and Garden Room are carpeted  
The Cottage Restaurant has wooden floorboards
14. There is one ground floor toilet. The entrance door way is 68cm (29.75 inches) wide which unfortunately does not provide sufficient space for wheelchair access

## THE COTTAGE RESTAURANT & DINING ROOM

15. Menus & safety notices can be printed in large print or read on request.
16. Menus are available on our website at [www.ternhillfarm.co.uk](http://www.ternhillfarm.co.uk) to enable guests to pre-order their chosen dishes
17. We can cater for most dietary requirements eg. Vegetarian, vegan, gluten free, wheat free, dairy free etc  
Please discuss with us when you reserve your accommodation or table reservation
18. Breakfast may be pre-ordered the night before, to speed up service.....a Breakfast Order Form is located in each bedroom
19. The height of the breakfast tables and restaurant tables is 75cm (29.5 inches)

## BEDROOMS

20. On arrival, you will be asked to register. We will require your name, home address & passport details if you are travelling from outside the EU. We are happy to assist with this process, or these details may be sent to us in advance.

We will show you to your bedroom, assisting with any luggage as required, where we will confirm the facilities available in your particular room

You will have a key for your bedroom and for the Front Door on your Bedroom Key Fob

21. All bedrooms are located on the 1st floor which are accessed by a flight of wooden stairs with 2 handrails.

The height of the handrails from the bottom of each step on the stairs is 91cm (36 inches)

There are 12 steps 18cm (7 inches) high & 22.5cm (9 inches) deep,  
then a left bend followed by another 2 steps,  
then a left turn up an additional 2 steps to the main 1<sup>st</sup> landing which services “Hodnet”, “Shrewsbury”, “Ironbridge” & “Whitchurch”

22. “Hawkstone” is reached via an additional 3 steps up 19cm (7.5 inches) high & 20.5cm (8 inches) deep and has restricted head height at the edges of the bedroom area, due to the pine panelled eaves.  
There are also 2 steps down 21cm (8.25 inches) high & 18cm (7 inches) deep to the WC & second washbasin

23. Bed sizes:

Ironbridge ~ Double Bed with metal Gothic-style headboard  
Height 62cm(25”), Width 137cm (4’6”or 25”), Length 193cm(76”)  
Hodnet ~ Superking size Bed with metal headboard  
Height 69cm(27”), Width 183cm(6’ or 72”), Length 198cm (80”)  
Shrewsbury ~ King size Bed with solid pine wood headboard & footboard  
Height 61cm(24”), Width 152cm(5’ or 60”), Length 198cm (78”)  
Whitchurch ~ Twin Beds with two cushion headboards  
When made up as two single beds, each bed measures  
Height 61cm(24”), Width 91cm(3’ or 36”), Length 193cm(76”)  
When made up as a double bed, the total bed area measures  
Height 61cm(24”), Width 182cm(6’ or 72”), Length 193cm(76”)  
Hawkstone ~ King size Bed with dark wood headboard & footboard  
Height 51cm(20”), Width 160cm(5’3” or 66”), Length 198cm (80”)  
Wollerton ~ Superking size bed Bed (Sleigh bed)  
Height 69cm(27”), Width 183cm(6’ or 72”), Length 198cm (80”)  
Wem ~ Superking size Bed with headboard cushions  
Height 69cm(27”), Width 183cm(6’ or 72”), Length 198cm (80”)

24. Approximate heights of Dressing tables are as follows:  
Hodnet & Shrewsbury, Hawkstone, Wollerton & Wem 76cm (30 inches) high  
Ironbridge 81cm (32 inches) high  
Whitchurch 74cm (29 inches) high
25. Lighting in bedrooms:  
All bedrooms have a bedside light either side of the bed, a centre light and a light by the dressing table.  
Ironbridge, Shrewsbury & Whitchurch have pull switch lighting in the bathrooms/shower-rooms/WC's. Hodnet & Hawkstone has a switch just outside the en suite WC to operate the lighting
26. A remote controlled, colour, flat-screened TV & DVD/CD Player are available in each bedroom which include Freeview
27. Free WiFi is available in all areas of the property... a password is required to log on.
28. All bedrooms offer a cordless kettle, selection of teas, filter & freeze dried coffee/decaff coffee, hot chocolate, sugar, large bottle of mineral water, flask of fresh milk. Fair-trade selections are also available.  
If you require any other items, please request when making your reservation. However, please note that there may be an additional charge for more difficult to obtain or expensive items
29. Four of the bedrooms have en suite shower rooms with a step 23cm (9 inches) high into the shower tray  
"Shrewsbury" has an en suite bathroom with a shower above the bath.
30. Towels, bathmats & face-cloths are provided in all bathrooms...they are white 100% cotton.  
For the visually impaired we can supply different coloured towels & facecloths for easy identification
31. A non slip bathmat is available for use in the bath in "Shrewsbury". All other rooms have showers with built in non-slip shower-trays
32. All bathrooms offer a selection of complimentary toiletries including Shampoo, Bath/shower Gel, Body/Hand Lotion, Soap, Shower Cap, Cotton Pads, Cotton buds, Disposable Razor Assistance dogs are welcome.

### EMERGENCY PROCEDURE

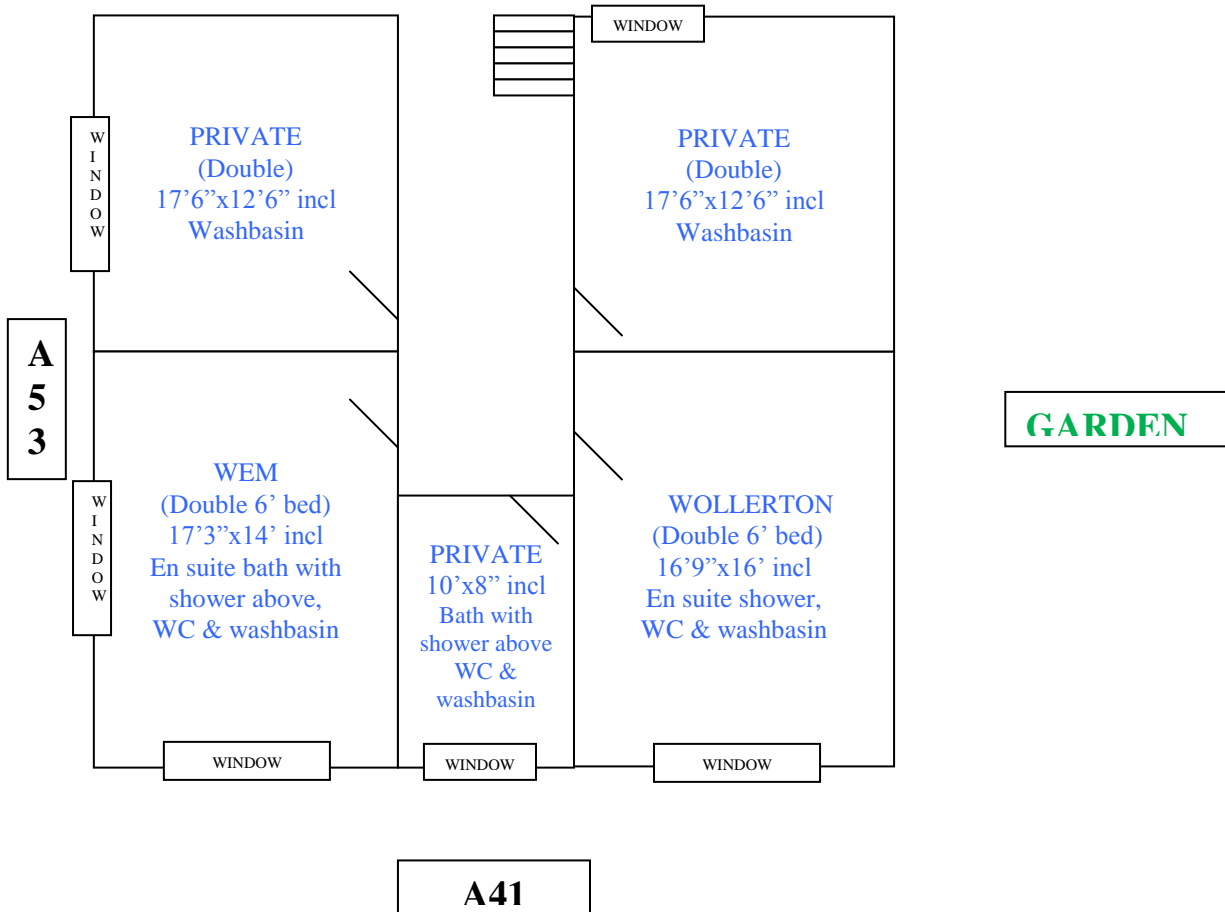
33. In the event of a fire there is one escape route via the internal stairs. A loud Fire Alarm will sound
34. Full evacuation procedures are detailed in each room. Assembly point is via the Garden Room Patio Doors onto the patio by the fish pool
35. Emergency lighting covers the stairs, hallway and downstairs public rooms.
36. Corridors offer good colour contrast & are well lit. Staff ensure there is no "clutter" to distract through the hallway
37. Staff are sensitive to guests with hearing and visual impairment.

### GENERAL INFORMATION

38. Mobile network is available, but has limited range for some networks
39. If you have any special requirement please mention when booking...we will try our best to accommodate all requests
40. Please follow this link for information on visiting Shrewsbury & the surrounding areas with a wheelchair  
<http://www.disabledholidayinfo.org.uk/shrewsb.htm>



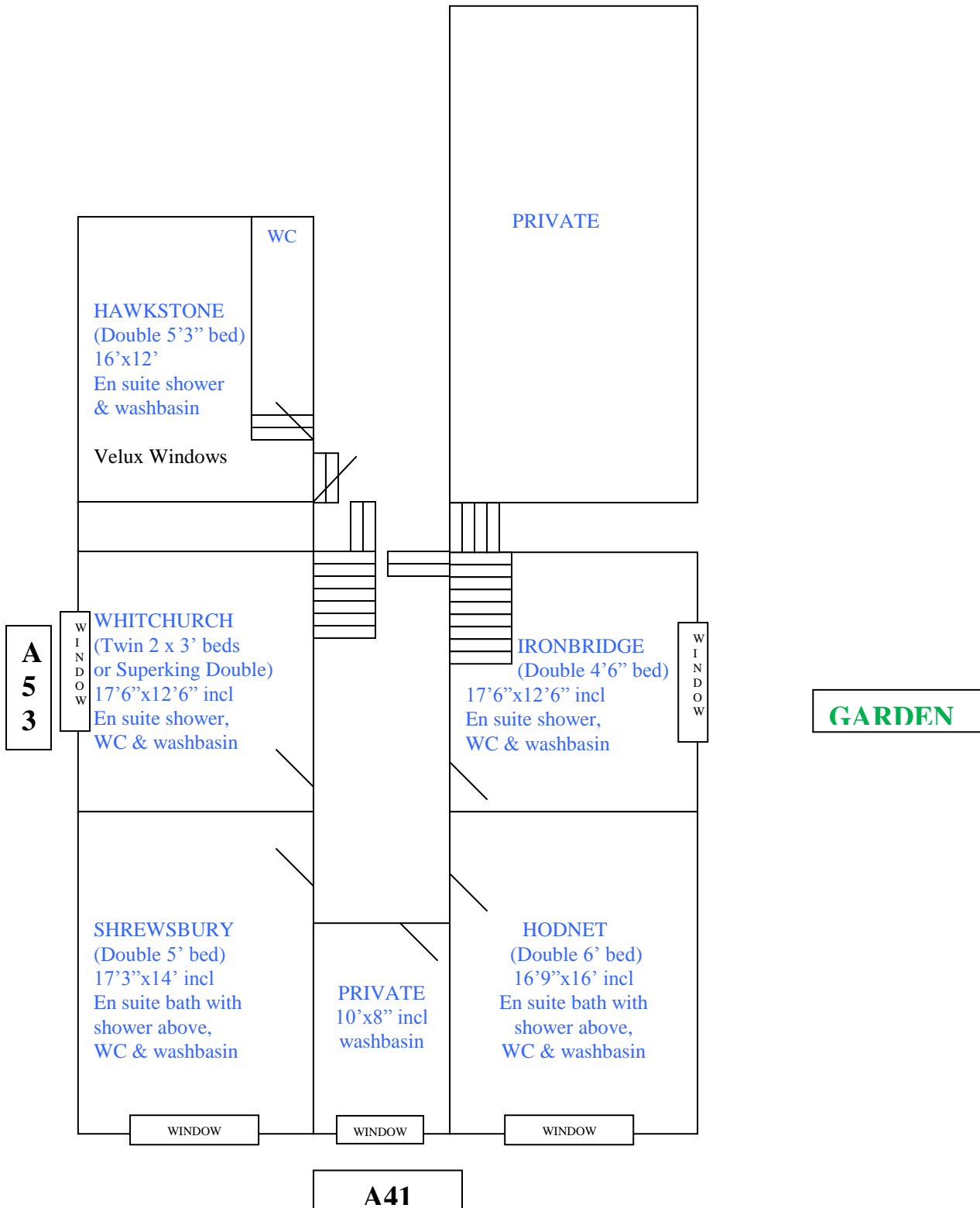
Ternhill Farm House & The Cottage Restaurant  
Floor Plan (not to scale)  
**SECOND/TOP FLOOR**



Ternhill Farm House & The Cottage Restaurant

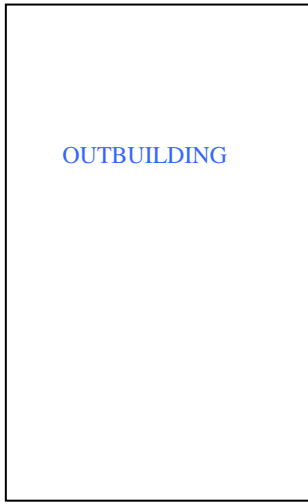
Floor Plan (not to scale)

# FIRST FLOOR

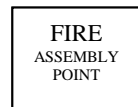
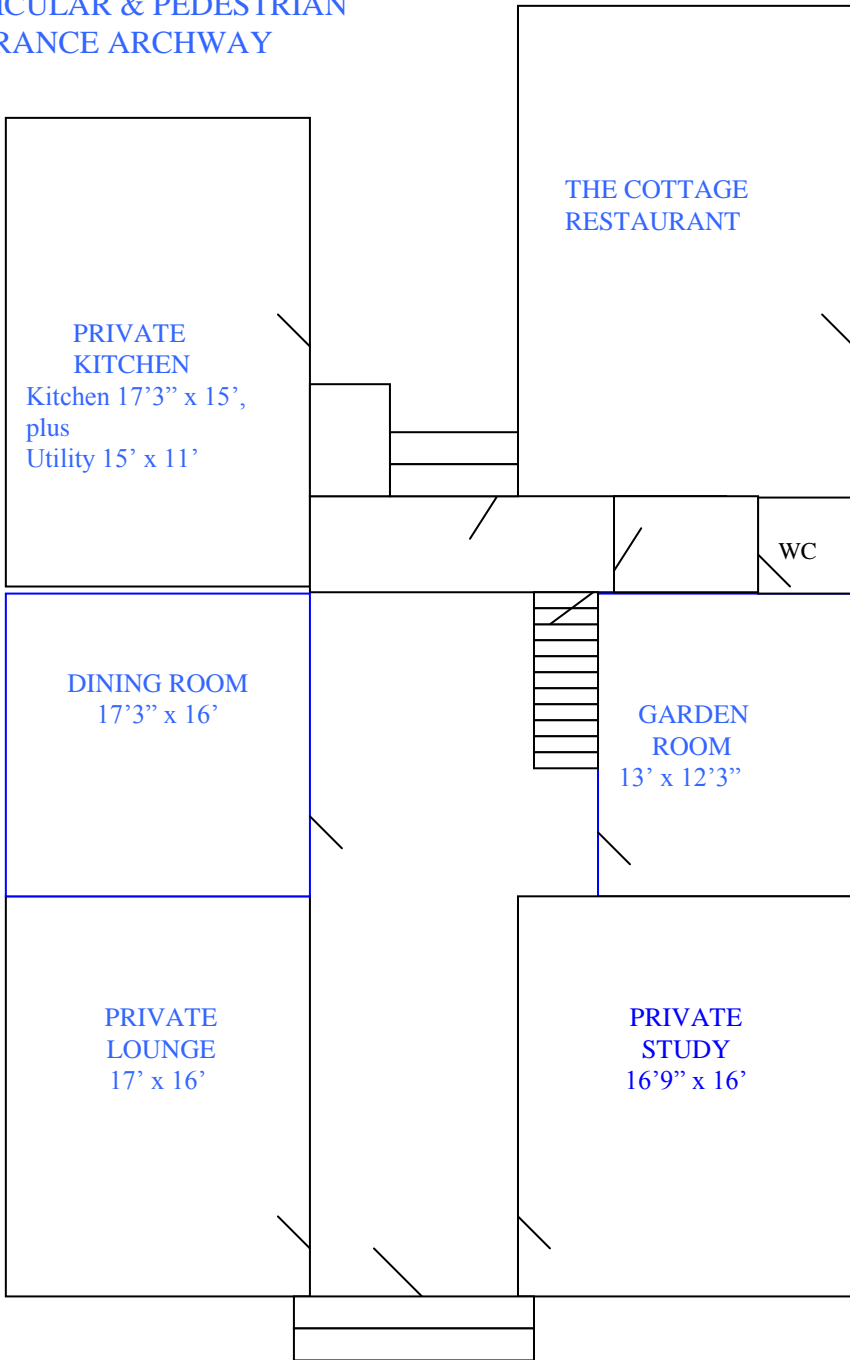


Ternhill Farm House & The Cottage Restaurant  
Floor Plan (not to scale)

# GROUND FLOOR



VEHICULAR & PEDESTRIAN  
ENTRANCE ARCHWAY



A  
5  
3

A41